

**QUESTIONNAIRE for vertical lift check valve with automatic recirculation Z 40.2**

**Identification details**

Customer:		Project:	
Inquiry no.:		Quantity:	

**Connection dimensions**

	DN	PN	Standard / Type	Note
Input flange:				
Output flange:				
Bypass flange:				

**Material**

Body / weld-on:		Disc / weld-on:		Sealing:	
-----------------	--	-----------------	--	----------	--

**Working parameters**

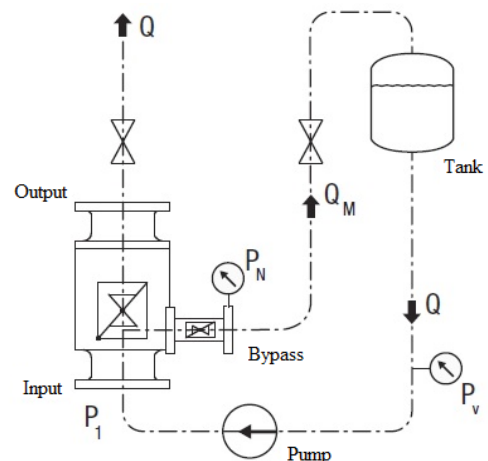
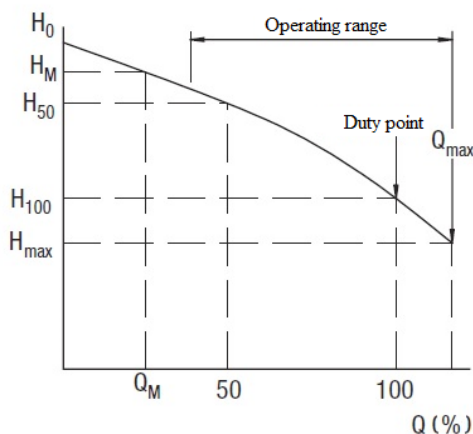
Medium:		Operating temperature [°C]:	
Density [kg/m <sup>3</sup> ]:		Ambient temperature [°C]:	

**Values of overflow**

Q <sub>M</sub> [m <sup>3</sup> /h]:		H <sub>M</sub> [m]:		P <sub>V</sub> [barg]:	
Q <sub>100</sub> [m <sup>3</sup> /h]:		H <sub>100</sub> [m]:		P <sub>N</sub> [barg]:	
Q <sub>max</sub> [m <sup>3</sup> /h]:		H <sub>max</sub> [m]:		P <sub>1</sub> [barg]:	

**Notes**

Date:		Signature:	
-------	--	------------	--



Q<sub>M</sub> – minimal flow (bypass), Q<sub>100</sub> – flow in the duty point, Q<sub>max</sub> – maximal flow  
H<sub>M</sub> – Head H at minimal flow, H<sub>100</sub> – head H in the duty point, H<sub>max</sub> – head H at maximal flow  
P<sub>V</sub> – tank pressure, P<sub>N</sub> – bypass backpress, P<sub>1</sub> – pump output pressure